



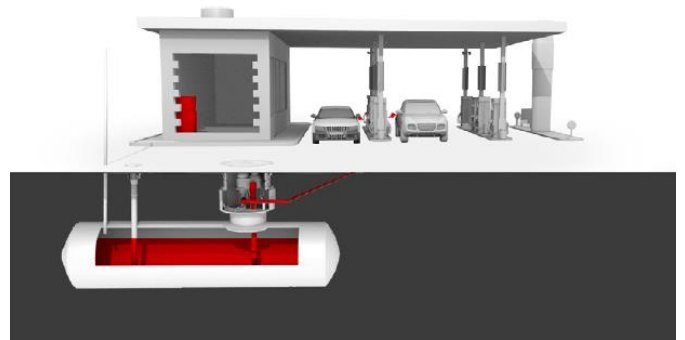
RETAIL PETROLUUM SOLUTIONS

TankMatic

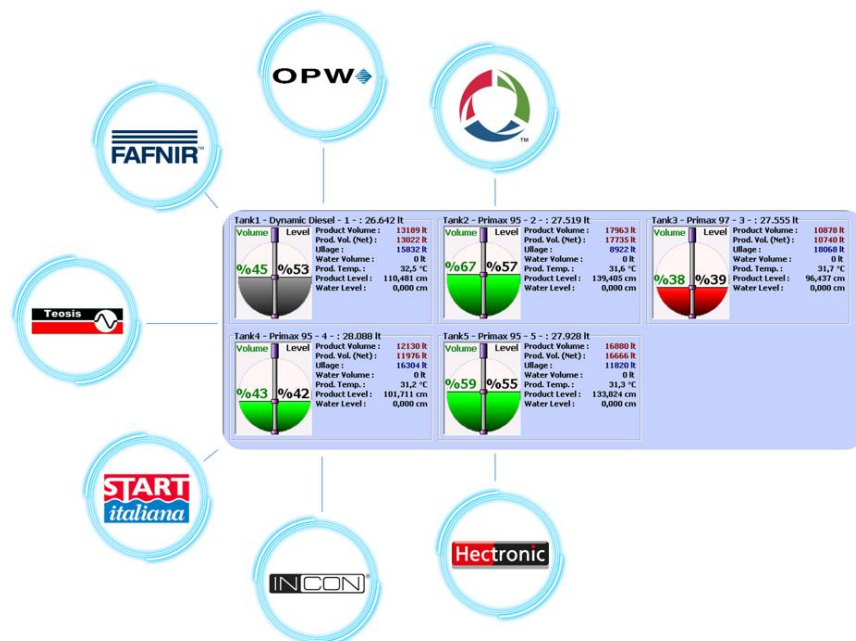
TankMatic is a multifunctional tank automation system operating between the tank automation systems and the PumpMatic. Through this software, regardless of which tank automation system is installed at the station, the administrators of both Oil Company and filling station can acquire reports and carry out their own processes.

TankMatic Activities

- ✓ Real-Time Inventory Monitoring
- ✓ Delivery Detection
- ✓ Manual Delivery
- ✓ Automatic Calibration
- ✓ Dynamic Calibration
- ✓ Leak Detection
- ✓ Alerts
- ✓ Closing the Shifts and Reconciliation
- ✓ Data Transfer



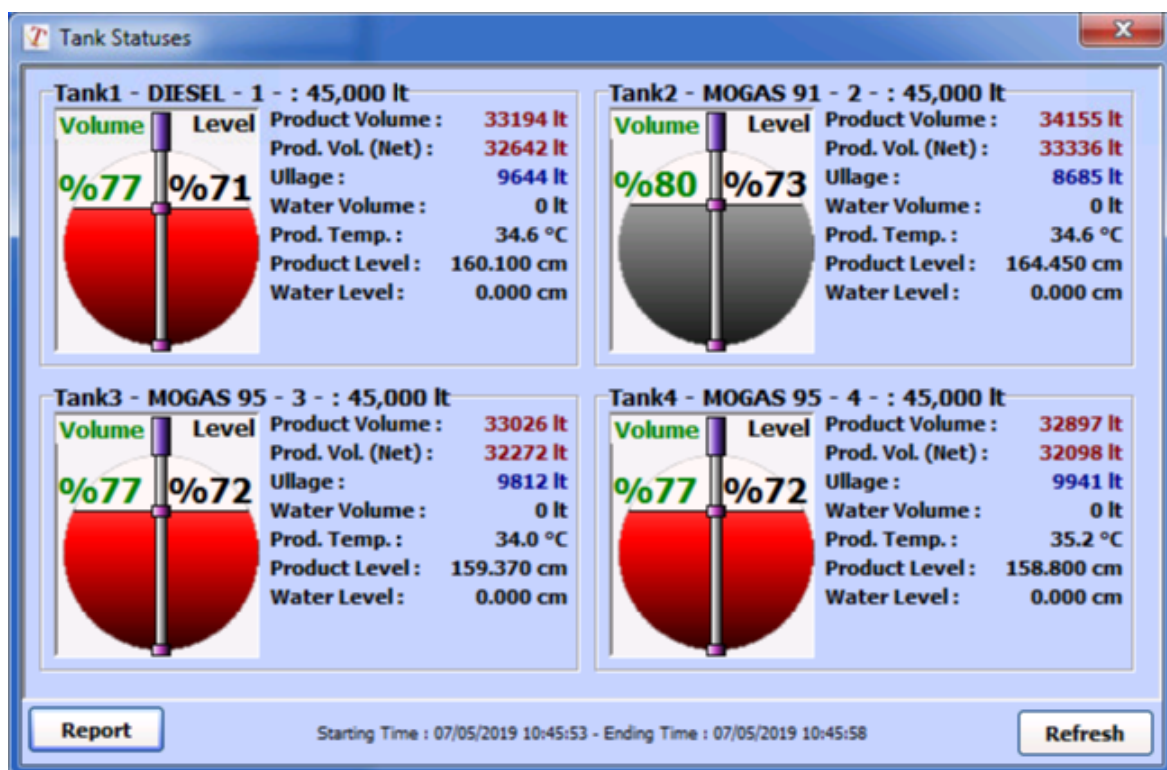
TankMatic eliminates the difficulty of using different techniques and software to access the tank automation systems remotely. TankMatic software is fully online integrated with PumpMatic system and POS/BOS. System reports wet stock inventory, fuel deliveries, leakage etc. All historical data is recorded as well.



- ❖ Compatibility with all ATG brands
- ❖ Direct-Interface Probe Communication
- ❖ Real-Time Tank Monitoring
- ❖ Auditory and Visual Warning System

TankMatic software calibrates the tanks automatically after the installation, and also just in time with sales. This calibration process is more accurate than the physical besides saving money and time.

All the data is displayed on the main screen and real time.



Closing the Shifts and Reconciliation

The tank shifts and the pump shifts both get closed during the shift changes. Reconciliation of the fuel quantities in the tank and in the pump takes place in the same shift. Also, the Pump-Tank reconciliation reports are ready by the end of the shift.

Alerts

High and low temperature, or high-water level, all unwanted situations are detected to alert the administrator. System records all the data and provides reports and analysis.

Leakage Tests

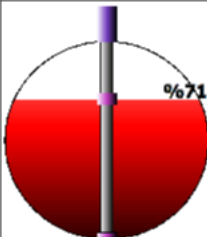
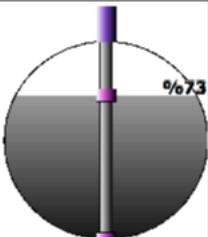
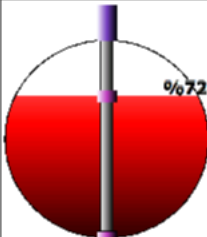
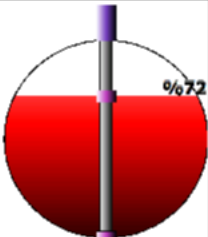
Potential leakages are detected and informed by the system automatically. The leakage detection can be performed through the checks made by the user by stopping the pumps, or automatic measurement carried out by the system itself when stationary.

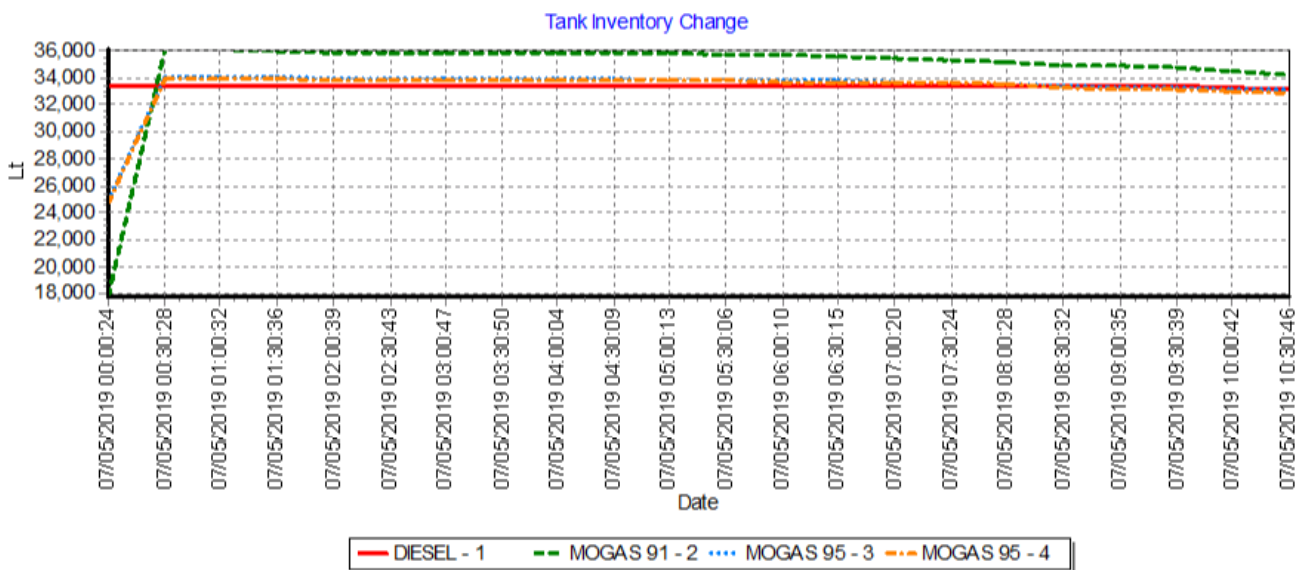
Inventory Report

All tank information is seen from Inventory window and this information can be instantly sent to a printer. A print preview window consisting of apparent values is opened by clicking on the Report button found on the Inventory window and this can be taken from the printer in A4 format. 8 tanks can be displayed on this page and if there are more, second page is created and reported.

TANK INVENTORY REPORT

Print Time : 07/05/2019 10:46:38

Tank No:1 - DIESEL - 1	Tank No:2 - MOGAS 91 - 2	Tank No:3 - MOGAS 95 - 3	Tank No:4 - MOGAS 95 - 4
			
Product Volume : 33194 lt Product Volume (Net) : 32642 lt Ullage : 9644 lt Water Volume : 0 lt Product Temperature : 34.6 °C Product Level : 160.1 cm Water Level : 0 cm Calibration In Progress : NO	Product Volume : 34127 lt Product Volume (Net) : 33310 lt Ullage : 8711 lt Water Volume : 0 lt Product Temperature : 34.6 °C Product Level : 164.32 cm Water Level : 0 cm Calibration In Progress : NO	Product Volume : 33026 lt Product Volume (Net) : 32272 lt Ullage : 9812 lt Water Volume : 0 lt Product Temperature : 34.0 °C Product Level : 159.37 cm Water Level : 0 cm Calibration In Progress : NO	Product Volume : 32897 lt Product Volume (Net) : 32098 lt Ullage : 9941 lt Water Volume : 0 lt Product Temperature : 35.2 °C Product Level : 158.8 cm Water Level : 0 cm Calibration In Progress : NO



Date	Tank Nr	Tank Name	Product Name	Product Level(cm)	Water Level(cm)	Product Volume(cm)	Water Volume(lt)	Net Product Volume(cm)	Temp. (C)
07/05/2019 00:00:24	1	DIESEL - 1	DIESEL	161.04	0.00	33,408.40	0.00	32,849.00	34.70
07/05/2019 00:30:28	1	DIESEL - 1	DIESEL	161.04	0.00	33,408.90	0.00	32,853.60	34.60
07/05/2019 01:00:32	1	DIESEL - 1	DIESEL	161.04	0.00	33,408.50	0.00	32,852.90	34.60
07/05/2019 01:30:36	1	DIESEL - 1	DIESEL	161.04	0.00	33,408.60	0.00	32,853.30	34.60
07/05/2019 02:00:39	1	DIESEL - 1	DIESEL	161.04	0.00	33,408.50	0.00	32,853.20	34.50
07/05/2019 02:30:43	1	DIESEL - 1	DIESEL	161.04	0.00	33,408.60	0.00	32,853.50	34.50
07/05/2019 03:00:47	1	DIESEL - 1	DIESEL	161.04	0.00	33,408.60	0.00	32,853.50	34.50
07/05/2019 03:30:50	1	DIESEL - 1	DIESEL	161.04	0.00	33,408.50	0.00	32,853.40	34.50
07/05/2019 04:00:04	1	DIESEL - 1	DIESEL	161.04	0.00	33,408.50	0.00	32,853.40	34.50
07/05/2019 04:30:09	1	DIESEL - 1	DIESEL	161.04	0.00	33,409.10	0.00	32,858.40	34.40
07/05/2019 05:00:13	1	DIESEL - 1	DIESEL	161.04	0.00	33,409.50	0.00	32,858.80	34.40
07/05/2019 05:30:06	1	DIESEL - 1	DIESEL	161.04	0.00	33,409.40	0.00	32,858.80	34.40
07/05/2019 06:00:10	1	DIESEL - 1	DIESEL	161.04	0.00	33,409.40	0.00	32,859.10	34.40
07/05/2019 06:30:15	1	DIESEL - 1	DIESEL	161.04	0.00	33,409.40	0.00	32,859.10	34.40
07/05/2019 07:00:20	1	DIESEL - 1	DIESEL	161.04	0.00	33,409.40	0.00	32,858.80	34.40
07/05/2019 07:30:24	1	DIESEL - 1	DIESEL	161.04	0.00	33,409.40	0.00	32,858.80	34.40
07/05/2019 08:00:28	1	DIESEL - 1	DIESEL	161.04	0.00	33,409.40	0.00	32,858.80	34.40
07/05/2019 08:30:32	1	DIESEL - 1	DIESEL	161.04	0.00	33,409.30	0.00	32,856.70	34.50
07/05/2019 09:00:35	1	DIESEL - 1	DIESEL	160.73	0.00	33,339.00	0.00	32,789.30	34.40
07/05/2019 09:30:39	1	DIESEL - 1	DIESEL	160.73	0.00	33,338.20	0.00	32,784.20	34.50
07/05/2019 10:00:42	1	DIESEL - 1	DIESEL	160.18	0.00	33,212.70	0.00	32,665.40	34.40
07/05/2019 10:30:46	1	DIESEL - 1	DIESEL	160.10	0.00	33,194.10	0.00	32,642.40	34.60

Delivery Reports

The deliveries to tanks are recorded electronically in both the actual temperature and as compensated by 15 C. The system provides the user with full information on the filling. These fillings are stored in the database and retrieved for control when necessary.

Tank Nr	Product Name	Time of Start	Time of End	First Product Volume (R)	Last Product Volume (R)	Delivery Amount (R)	Net Delivery Amount (R)	Temp. (C)	Sales (R)	Total Delivery (R)
2	MOGAS 91	0430 12:40	0430 13:01	19,232.67	37,298.80	18,066.13	17,596.75	34.41	200.21	18,266.33
		0502 07:41	0502 08:01	18,940.06	27,972.29	9,032.24	8,840.31	34.00	200.52	9,232.76
		0503 21:02	0503 21:32	10,288.10	28,533.75	18,245.65	17,848.23	35.38	228.42	18,474.07
		0504 22:29	0504 22:50	19,262.20	37,458.51	18,196.31	17,788.38	34.13	79.92	18,276.23
		0507 00:07	0507 00:28	17,808.50	36,140.77	18,332.27	17,913.35	34.40	0.00	18,332.27
						81,872.59	79,987.01		709.07	82,581.66

Tank Nr	Product Name	Time of Start	Time of End	First Product Volume (R)	Last Product Volume (R)	Delivery Amount (R)	Net Delivery Amount (R)	Temp. (C)	Sales (R)	Total Delivery (R)
3	MOGAS 95	0430 12:40	0430 12:50	24,576.05	33,507.96	8,931.91	8,683.76	33.19	89.11	9,021.02
		0502 07:42	0502 07:49	30,865.06	37,855.05	6,989.99	6,829.05	33.99	67.10	7,057.09
		0503 21:00	0503 21:11	25,842.67	34,871.34	9,028.67	8,824.06	33.90	27.15	9,055.82
		0504 22:29	0504 22:39	28,789.41	37,356.83	8,567.42	8,371.60	33.90	235.43	8,802.84
		0507 00:07	0507 00:18	24,914.36	34,064.60	9,150.24	8,934.34	33.96	0.00	9,150.24
						42,668.23	41,642.81		418.78	43,087.02

Tank Nr	Product Name	Time of Start	Time of End	First Product Volume (R)	Last Product Volume (R)	Delivery Amount (R)	Net Delivery Amount (R)	Temp. (C)	Sales (R)	Total Delivery (R)
4	MOGAS 95	0430 12:51	0430 13:03	24,399.99	33,479.42	9,079.42	8,892.41	35.23	176.92	9,256.34
		0502 07:49	0502 07:57	31,202.15	33,331.52	2,129.37	2,090.28	33.63	51.65	2,181.02
		0503 21:13	0503 21:23	25,752.80	34,909.71	9,156.90	8,959.37	34.94	150.50	9,307.40
		0504 22:40	0504 22:51	28,706.28	37,356.83	8,650.55	8,463.54	33.77	147.16	8,610.71
		0507 00:18	0507 00:29	24,771.78	33,936.58	9,164.80	8,971.39	34.51	0.00	9,164.80
						38,962.99	38,106.10		526.22	39,489.21

Calibration

Automatic calibration; your tank needs to be completely full as recommended (at least 80%) to start the process. Lower level previously determined when (default 18 cm) the automatic calibration is completed. During this operation, prevent the sales of stations or it will cause negativity as well as a loss of time and labor. Failure to do so results in cases where it is initially not fully charged.

No	Product	Manifold/Syp...	Diame...	Capacity(lt)	Active	Starting Time	Ending time	Level (cm)	Ending Level...
1	DIESEL	Independent	226	45000	NO			160.10	18.00
2	MOGAS 91	Independent	226	45000	NO			164.64	18.00
3	MOGAS 95	Syphon	221	45000	NO			159.37	18.00
4	MOGAS 95	Syphon	221	45000	NO			158.80	18.00